

Vineland Public Charter School – Cleaning Specs -Request to Bid Custodial Services for the 2022-2023 School Year Bid No.: 01-22/23

## REQUEST FOR BIDS

PUBLIC NOTICE  
VINELAND PUBLIC CHARTER SCHOOL  
REQUEST FOR BIDS FOR CUSTODIAL SERVICES FOR THE 2022/2023 SCHOOL YEAR  
NO.: 01-22/23  
September 21, 2022

NOTICE is hereby given that the Vineland Public Charter School Board of Trustees is soliciting sealed bids for Custodial Services until 2:00 p.m. on October 13, 2022 at the office of the School Business Administrator and on Zoom.

Specifications for bids, as well as Zoom meeting information, may be obtained through email at [dzakroff@cccharters.org](mailto:dzakroff@cccharters.org) from Dennis Zakroff, School Business Administrator between the hours of 9:00am to 3:00pm.

Upon release of the bid, all communications concerning this information must be directed in writing by email no later than 4:00 pm on October 12, 2022 to the School Business Administrator.

A recommended walk-through meeting is scheduled for October 5, 2022 at 2:00pm at 1480 Pennsylvania Ave., Vineland, NJ 08361.

All bids must be submitted no later than October 13, 2022 at 2:00 p.m.

Bids should be delivered in a sealed envelope and addressed to Dennis Zakroff, School Business Administrator, be clearly marked "Bid#01-22/23 Vineland Custodial Services", and submitted to:

Vineland Public Charter School  
Business Office  
1101 Wheaton Ave.  
Millville, NJ 08332.

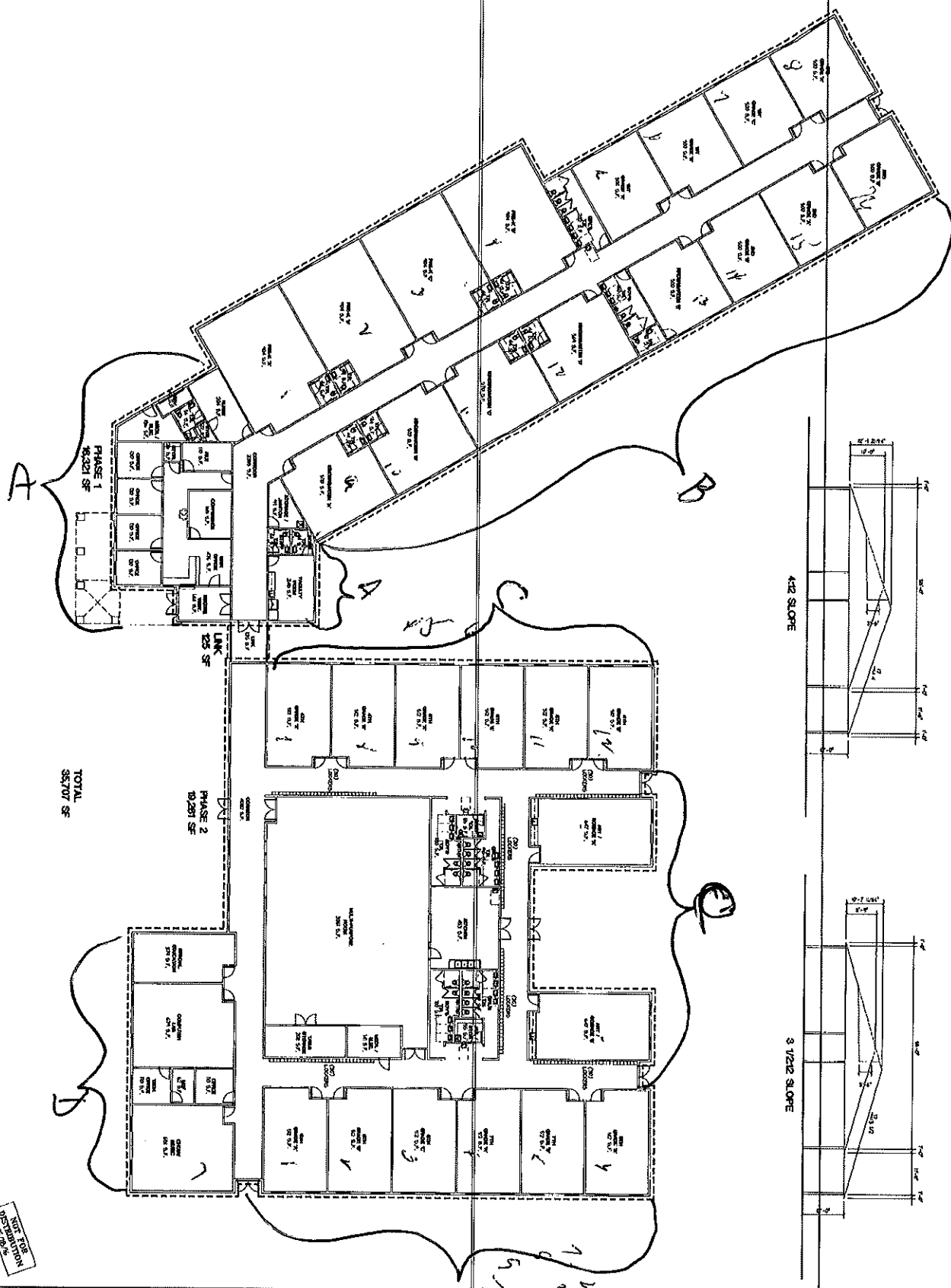
All bids must be submitted on the bid form contained in the specifications. Bids which are not submitted on such form may be rejected.

Bidders are required to comply with the requirements of N.J.S.A. 10:5-31 et seq and N.J.A.C. 17:27 et seq Affirmative Action.

The Board assumes no responsibility for bids mis-mailed or mis-directed. The Vineland Public Charter School reserves the right to accept or reject any and/or all bids.

By order of the Vineland Public Charter School Board of Trustees. Christina Murphy, Treasurer.

---



TOTAL SECTOR SF

PHASE 2 10,291 SF

PHASE 1 10,291 SF

4.2% SLOPE

3 1/2% SLOPE

NOT FOR OPERATIONAL CONTROL

<p>PROJECT: WYLAND PUBLIC CHARTER SCHOOL</p> <p>ARCHITECT: [Logo]</p> <p>DATE: 10/15/14</p> <p>SCALE: AS SHOWN</p> <p>PROJECT NO: SK-1</p> <p>DATE: 10/15/14</p>	<p>1 of 1</p>
--	---------------